



LUDWIG-
MAXIMILIANS-
UNIVERSITÄT
MÜNCHEN

MASTER'S PROGRAM EVOLUTION, ECOLOGY AND SYSTEMATICS

FACULTY OF BIOLOGY

ABOUT THE EES^{LMU} MASTER'S PROGRAM

Established in 2007, the EES^{LMU} Masters is a multidisciplinary program for German and international students with a background in biology or a related subject. All courses are offered in English. The EES^{LMU} Masters contains many innovative elements such as a mentoring program, integrated skills courses and individual research training. We also apply a feedback and revision system instead of simple grading. Thanks to funding from the Volkswagen Foundation, students can apply for their own research and travel money and for funds to invite international speakers.

THE EES^{LMU} MASTERS WILL PREPARE YOU FOR RESEARCH AND INDUSTRY.

The EES^{LMU} Masters will provide you with a broad biological background and will train you to become a critically thinking scientist. Not only will you gain extensive research experience that will prepare you for a Ph.D. program, but you will also develop valuable technical and communication skills that will prepare you for a job either within or outside of academia. During this two year program, you will become familiar with the many techniques and approaches that are used in evolution, ecology and systematics research. These include microarray techniques, field experiments, the use of natural history collections, mathematical modeling and modern genetic methods.

WHY COME TO THE LMU?

At the LMU Munich, you will be able to take advantage of an award winning teaching program at one of Germany's most prestigious research universities! Located in one of the country's most vibrant cities just a one hour train ride from the Alps, the LMU was recently awarded the highest excellence status in a nation wide competition. Among Germany's top rated universities, the LMU is the only one to offer evolutionary research at a broad scale. The Bavarian Natural History Collections and the Max Planck Institute for Ornithology further contribute to the unique research environment. The EES^{LMU} Master's program was designed to combine excellent research with first class teaching. With its student centered approach, it was awarded first prize in a competition for innovative educational concepts by the Volkswagen Foundation.

APPLICATIONS

To apply, you must have a Bachelor's degree (or equivalent) in a natural science discipline, or show that you can realistically expect to finish your Bachelor's before starting the Master's program. The deadline for applications is always the 31st of January for students who need a visa to study in Germany and the 30th of June for EU students and others who do not need a visa. For specifics on the application and selection procedures, please see our website.

4.	Master's thesis				
3.	Research project	S	Interdisciplinary seminar	Individual choice of courses	
2.	Research project	S	Interdisciplinary seminar	Excursion	Statistics
1.	Research project	S	Interdisciplinary seminar	S	Evolutionary genetics
				Evolutionary ecology	Systematic data and evidence

Semester

S = integrated skills course in scientific writing, presentations, grant proposals etc.



The 2009 students Elena Berg



Biozentrum Jan Greune



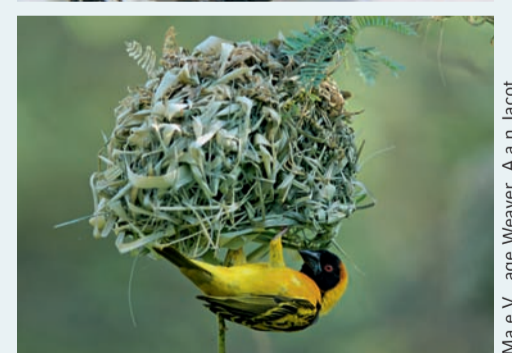
Botanischer Garten Franz Höck



Tomato Carlos Merino



Ants Susanne Foltz



Maevage Weaver Alan Jacot

ADDRESS FOR APPLICATIONS AND MORE INFORMATION

LMU Munich Biozentrum
Großhaderner Str. 2
D-82152 Planegg-Martinsried

Elena Berg, Ph.D.
Program Coordinator
of the Munich Graduate School for
Evolution, Ecology and Systematics
Tel.: ++49 (0) 89 / 21 80 - 74 208
E-Mail: berg@bio.lmu.de

WWW.EESLMU.DE

